

# 4/8 PoE NVR Kit's



SP-IPPOENVR-

## QUICK INSTALLATION GUIDE

Please read the user manual before using your equipment and save it for future reference

### 1. Preface

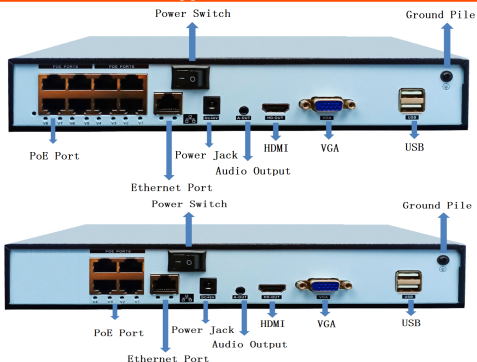
Thank you for purchasing our product. Do not hesitate to contact us whenever you require assistance.

These instructions apply to the video recorder which also works multichannel.

Just some instructions for product operations include, for more information read the CD or visit our website

Any improvement in product features will be added in the operating consistently without notice.

### 2. Instructions appearance and interface



### 3. On / off and user input

**3.1 Installing the hard disk (HDD)**  
(Omit this if you do not need storage).



1. Install the fixed screw for HDD



2. HDD data line and power line connection

**3.2 On**  
Connect to the power source, the LED will turn on the NVR recorder is on.  
**Note:**  
1. Use the appropriate adapter to avoid abnormal situations or damage.  
2. Turn off the power switch (some may have power switches)

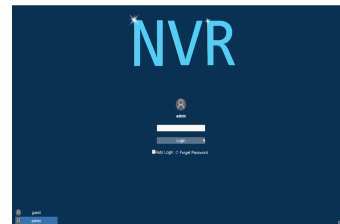
### 3.3 Shutdown

**3.3 Shutdown**  
To turn off the device, there are two muted available: Soft-Off (off normal, system) and forced off (Hard-Off)  
Off: Select <Main Menu> - choose the <Logout> then select option - <Shutdown>  
Force off: disconnect the power supply on the rear panel.  
**Note:**

- 1. Energy Recovery: When the NVR is shut down abnormally restart the device, all recordings are automatically saved and recover in the previous state.
- 2. Replacing the HDD (Hard Drive): Turn off the device before replacing the HDD .

### 3.4 Logging on System

When the NVR starts, the user must login and the system provides the corresponding functions with the user profile. There are two user profiles. The names are admin and default (default). The default Admin profile value does not have password protection.

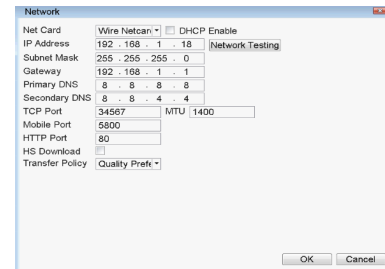


**Password protection:** If the password is entered incorrectly three times, an alarm will start.

If the password is entered incorrectly five times, the account will be blocked. (When you restart the device or after half an hour, the account will be unlocked automatically).

### 4. Network Adjustments

Go to (Main Menu)> (System)> (Network Settings) as follows:  
**(IP Address):** the default is 192.168.1.18;  
**(Subnet mask):** the default is 255.255.255.0;  
**(Default Gateway):** the default is 192.168.1.1



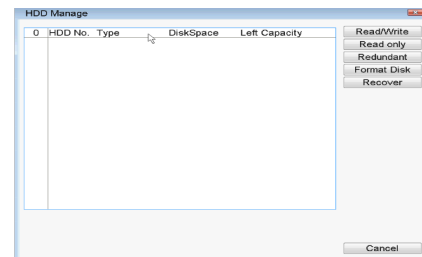
**Note:**  
**Network camera addresses must share the same network segment with the router and full fill your IP rather than conflicts with other IP to ensure access to the network device;**

Go to ( Main Menu)> (System )> (Network), Check to enable DHCP,select Auto-obtain IP Address to select an automatic IP (The router must be enabled in DHCP)

### 5. Settings HDD (HDD)

DVR must contain (HDD) as follows:  
**5.1 Management Hard Disk Drive (HDD)**  
After installing the hard drive, start the DVR, go to < Main menu> <Advanced>-<HDD Manage>  
To format the hard (HDD) disc.  
Then set your hard disk as read-write.

**Note:**You need at least one disk read-write for normal recording



### 5.2 Record Settings

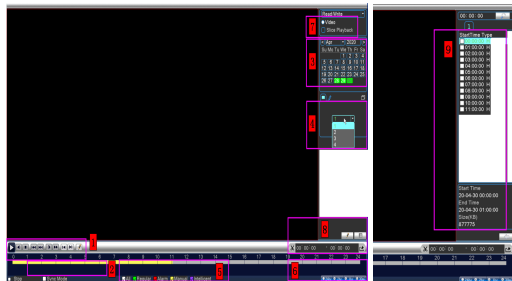
Go to <Main menu>-<Advanced>-<Record>  
**Channel** Choose the corresponding channel number. Choose the All to setup all channels  
**Redundancy** Choose the redundancy function to duplicate the backup file.  
**Length** Sets the length of each video file from 1 min to 120 min, 60 minutes is the default.  
**Pre-record** Set the pre-recording duration, maximum 30 seconds  
**Video mode:** three video modes. Configuration, manual, close  
**Configuration:** Record according to the selected type of video (common, detection) and the time section.  
**Date:** The date is available for selection. Set the time from Monday to Sunday. In addition, you can set four time periods for the basis of record  
**Period** Set the time section of common recording, the recording will start only from the established range  
**Manual** Corresponding channel starts recording 24 hours nonstop.  
**Mode** Set the recording type: regular detect  
**Regular Record** according to section defined time. The video file type is 'R'  
**Detect** Within the time section, enable motion detection, video blind, video loss or abnormal analysis. When this alarm is configured as an open recording detection it is on. The video file type is 'M'

## 6. Reproduction

Follow the playback process to play the recorded video

Steps: < Main Menu>-<PlayBack>- <Play>

**Note:** Hard Disk (HDD) that stores video files must be in the read-write or read-only.



1. Playback control/ communication mode
2. Time display
3. Synchro
4. Synchro
5. Options Timer
6. Time Search
7. File Attributes
8. List of Files
9. Search by Time

Double-click the file name to play the video.

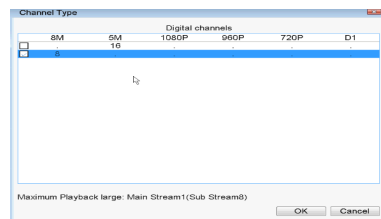
## 7. Channel Management

**Note:** Not all models support this feature.

Go to <Main menu>-<System>-<Channel Type>-Administration channels to set up.

you can connect the camera to a pure IP network or a hybrid network.

6



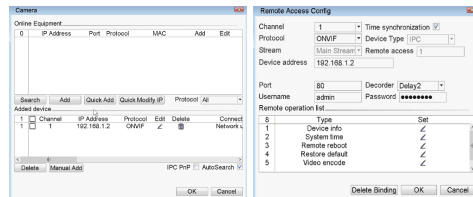
Go to < Main menu>-<System Setup>-<Digital>-<Channel Type> to add the IP camera to digital channels.

**Channel Setting:** Set analog channel and digital channel, switch the corresponding options according to requirements, and save it with OK.

**Channel Manage:** Manage IPC interface, online equipment, automatic search / manual search, protocol management and other operations.

**Channel** Select the channel number to add IP camera.

**Add** Click "Add", you will see the following interface:



**Search:** In the same local area network, search and display the camera of the IP address of the same gateway as the local area network, select an IP address, device name, type, IP address, port and protocol will be automatically entered.

**Protocol :** Support NETTP, ONVIF and all. The default is ALL.

**Ok :** Click OK to finish adding, return to the digital channel interface, choose the monitoring device to preview added.

7

## 8. LAN Access

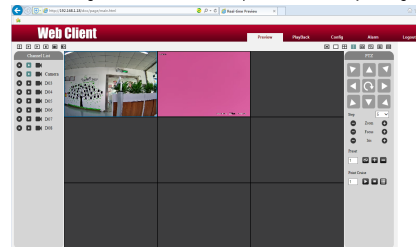
When connected to the network, log on to the NVR to start remote monitoring through a browser web.

### 8.1 Connecting NVR

Open the web browser, enter the IP address, use this address 192.168.1.10 as an example, enter http://192.168.1.10 to connect.

### 8.2 Access to NVR

Enter the username and password. (The default user is admin, no password). Change the administrator password after you log on



**Note:** You must install the plugins if you log on through the browser. The browser is configured to receive the plug in (Internet Explorer is recommended). Please set the security level. Go to (Internet Options) -(Security)-(Custom)-(Activex), enable all, or visit our official website to download and install the plug-ins.

### 8.3 Mobile Access

**Mobile operating systems:** Android, IOS

**Software name:** XVRView

**Software download:** Google Play/Google App Store/Apple

**Note:** When the device has access to a public network, you can perform monitoring via the Web.

8

## 9. Access to a public network : (CLOUD OPERATION)

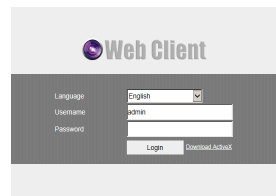
Cloud technology takes a step in the Internet, which facilitates monitoring considerably users via a public network.

For your first use, start here. If not, skip this step.

### 9.1 PC Access

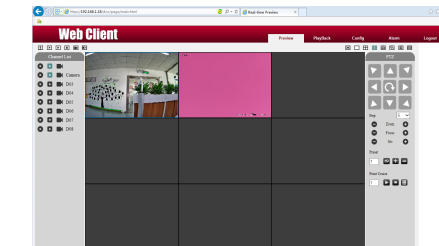
(1) Enter the IP address of the NVR, for example, http://192.168.1.18

(2) Install step by step as indicated.



**Note:**  
Default username: admin  
Default Password: it does not have password

(3) Click Login to access Web service interfaces:



(4) After a successful configuration, as long as it can surf the Internet, you can access the device. PC monitoring.

(5) The device list on the left, click on the preview device.

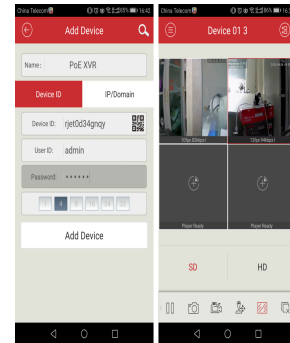
9

## 9.2 Mobile Access

Mobile operating systems Android, IOS

Software name: XVRView

Software Download: Google Play/Google App Store/Apple



Due to our policy of continuous improvement, we reserve the right to change specifications without notice. Errors and omissions excluded. These instructions have been carefully reviewed before publication. However, Manufacturer can not accept any responsibility for any misinterpretation of these instructions.

## Packing lists

	Articles	Articles
1	8 Channel PoE NVR Kit's	1 pc
1	NVR power supply	1 pc
1	Wired mouse	1 pc
1	User manual	1 pc
1	Accessories	1 pc

10

## Warranty Policy

11